

Mars300 Use Notes



Shenzhen Hollyland Technology Co.,Ltd

(TX)& (RX)?

Transmitter (TX)



Receiver (RX)



Device Interface (TX)



Antenna Interface

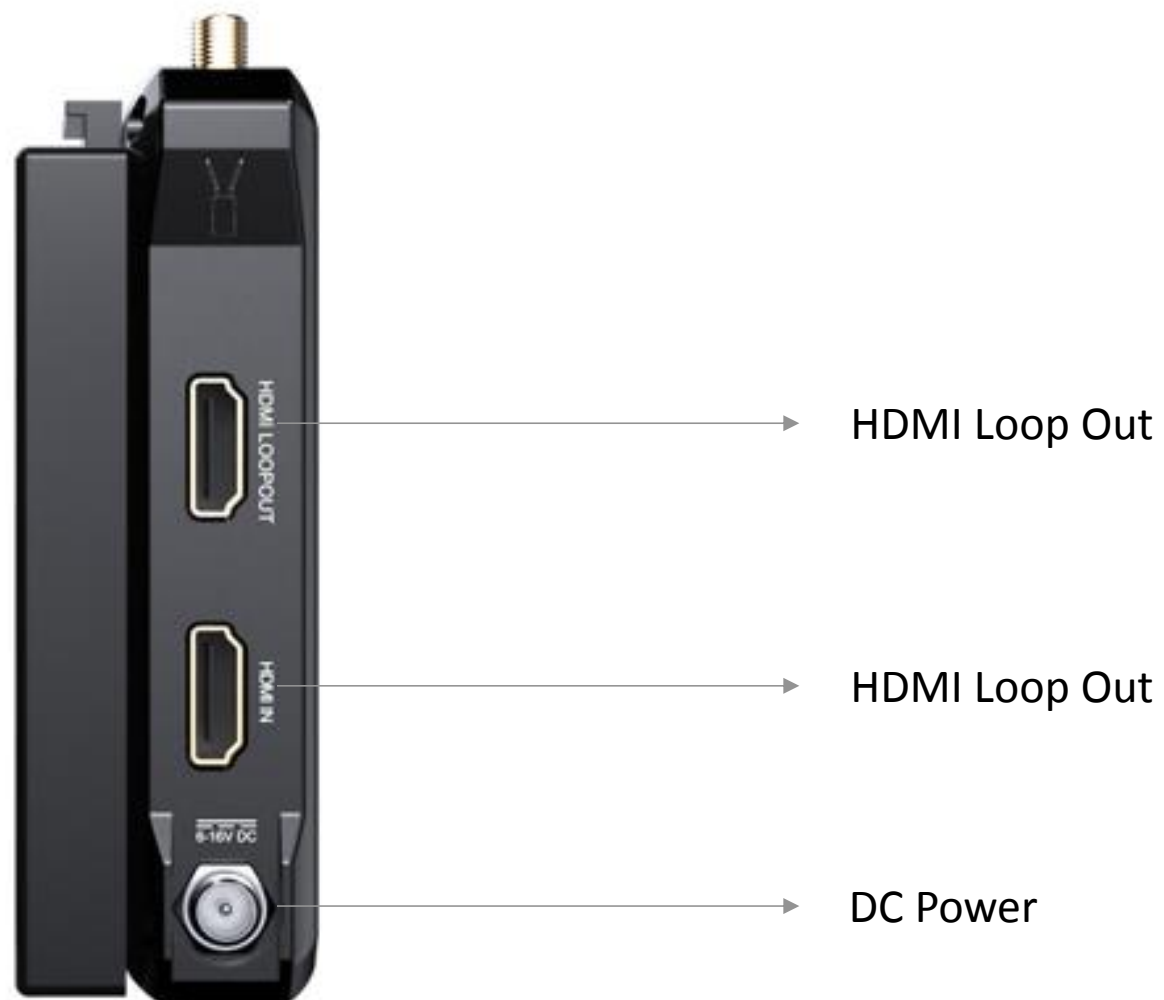
Accessory Mounting Hole

Device Interface (TX)



Attention: If there is a lot of wireless interference on the scene, the screen appears to be stagnation, mosaic, etc. Please double-click to change the frequency)

Device Interface (TX)



Device Interface (RX)



Antenna Interface

Accessory Mounting Hole

Device Interface (RX)



Link Status Light

Video Status Light

Display Device Information
(double-Click to display device
information)

USB Firmware Upgrade Interface

Pair Button(Press for 10 seconds
to enter pairing mode)

Power Switch

Attention: The device has been paired when it leaves the factory, and there is usually no need to re-pair it

Equipment Installation (TX)



The transmitter is installed vertically and is mounted on the hot shoe of the camera through the bottom 1/4 threaded hole

Equipment Installation (TX)



The transmitter is Horizontal installed and is mounted on the hot shoe of the camera through the bottom 1/4 threaded hole

Device Status



Receiver Video Indicator

- The indicator light is steady orange, indicating that the video is normal
- Not bright, indicating that no video was received



Receiver Link Indicator

- The indicator light is steady green, indicating that the video is normal
- The indicator light flashes red, indicating that it is disconnected
- The indicator light fast flashes red, indicating that the device is pairing

Attention: The HDMI cable is easy to loose, resulting in no video, if you meet the problem, please kindly check the camera's HDMI cable firstly

Equipment Installation (TX)



Transmitter Link Indicator



- The indicator is steady green, indicating that the video is normal
- The indicator flashes red, indicating that it is disconnected
- The indicator fast flashes red, indicating that the device is pairing

Transmitter Video Indicator



- The indicator is steady orange, indicating that the video output by the camera is
- The indicator is not bright, indicating that the camera HDMI has no output



Attention: The HDMI cable is easy to loose, resulting in no video, if you meet the problem, please kindly check the camera's HDMI cable firstly

FAQ



1. How to change the frequency channel?

A: Double click the CHANNEL button 2 times, the transmitter will switch to the next frequency point. During the switch, the Link light will turn red and start flashing, and then turn green and normally on, which indicates that the frequency point is switched successfully



2. The receiver link indication is always green, but the video light off, and monitor has no video, how to do?

A: Check the transmitter video light steady on or not, if not, the problem may come from camera HDMI output. You need to modify camera settings or change another HDMI cable to try



3. Receiver or transmitter link light is red and flash, the monitor has no video, what is the problem?

A: Double-click transmitter CHANNEL button, change to next channel. It is normally because there are other wireless signal interference. Switch the channel can avoid the interference

FAQ



4. The device is disconnected after a while, or the video stagnation, how to solve it?

A: It is normally because there are other interference in the field, double-click the transmitter CHENNEL button, and change to another channel



5. Use standard power supply, but the device cannot power on, what is the problem?

A: Our DC port and DC adapter are with locks. When connecting the DC adapter, be sure tighten the lock. Otherwise, there will be no power



6. How to power the transmitter and receiver?

A: Both transmitter and receiver can be powered by SONY F550/F750/F970 batteries; They use the standard 12V AC adapter for power supply

FAQ



7. If transmitter and receiver powered by battery, how long it will work?

A: F970 battery can work around 6 hours, F750 battery can work around 4 hours, F550 battery can work around 2.5 hours. Different brand batteries have different capacity, and support different working hours



8. What is the video output format for Mars300? Does it support I - format?

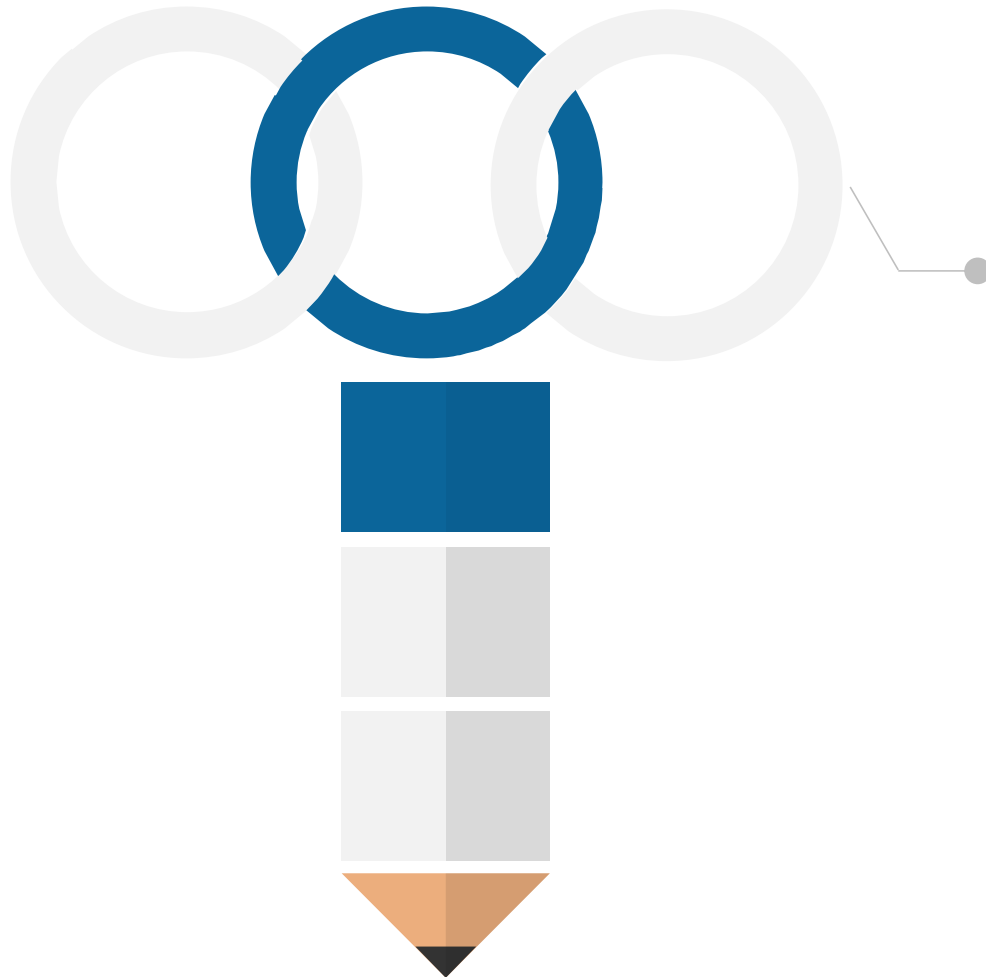
A: Mars 300 can output the same video format as that of the camera. Mars 300 will not convert the video format outputted by cameras' HDMI interface. Mars 300 supports 1080p60, 1080p50, 1080i60, 1080i50, 720p, and other common video formats



9. Why did the screen of the SLR camera turn off after Mars300 connected with SLR camera?

A: DSLR camera like Canon 5D Mark III will need to set up "screen stays on when connected with external monitor"





10. Does Mars300 receiver side 2 HDMI can output video signal same time? And what is the function for HDMI LOOP Out?

A: RX 2 HDMI interfaces can output signal at the same time. When RX connected with camera, the HDMI-loop out interface can output video signal to external monitor

Thanks